

Crystal Lake Retreat



Private Lake Front Cottage

Wooded Setting
2 Bedrooms - down
Large Loft - up
1 & 1/2 baths
1,400 finished sq. ft.
Wood Burning Stove
Fully Furnished Kitchen
(Self Catering)
Deck & Grill

Tel: 573 243 8397
Fax: 573 243 8397 *9
E-Mail: info@crystal-lake-retreat.com
Website: www.crystal-lake-retreat.com

Near-By Places of Interest:

Southeast Missouri University,
Cape Girardeau, MO

St. Louis Iron Mountain & Southern Railway

Bollinger Mill, State Historic Site

Old Saint Vincent's Church, Cape Girardeau
Built in 1853 in English Gothic style architecture. SEMO University Chamber Orchestra concerts.

Black Forest Village 2728 County Rd. 638, Cape
Girardeau, MO, 1870's Old West Town replica.

Flickerwood Arena, Jackson, MO

Trail of Tears State Park, (800-379-2419)

Pee-Wah Trail, 9.2 mile trail, (573-334-1711)

Apple Creek Conservation Area Trails,
5 mile trail (573-547-4537)

Bent Creek Golf Course, 573-243-6060

Nature Center Campus, 573-290-5218

Bollinger County Museum, Marble Hill, MO

River Ridge Winery, Commerce, MO

Red House Interpretive Center,
Cape Girardeau, MO – Lewis & Clark

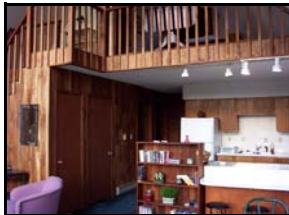
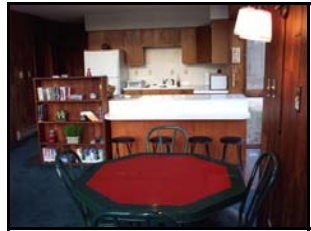
Cape River Heritage Museum,
Cape Girardeau, MO

Our Lady of the Barren's Church & Old
Seminary Grounds, Perryville, MO

For more information on the area contact:
Cape Girardeau Convention & Visitors Bureau
capegirardeaucvb.org



Crystal Lake Retreat



Mailing Address:

Crystal Lake Retreat
306 Connie Dr.
Jackson, MO 63755

Phone: (573) 243 8397

Fax: (573) 243 8397 *9

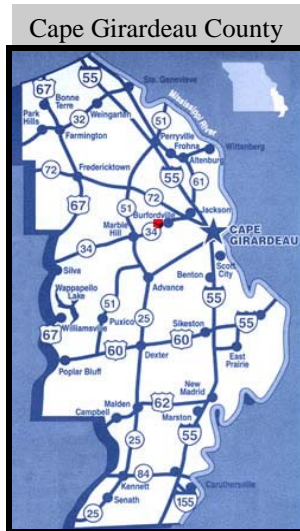
Email: info@crystal-lake-retreat.com

Website: www.crystal-lake-retreat.com

Private retreat:

Located 125 miles South of St. Louis
and 180 miles North of Memphis,
off of I-55

Ten miles from Jackson, MO and
20 miles from Cape Girardeau, MO.



Activities:
Fishing
Hiking Trails
Picnics
Cook Outs
Bird Watching
&
Specifically -
Rest & Relaxation!

Rejuvenate your spirit in the Glory of Nature



Fishing, 5.3 Acres Stocked Lake

- Fishing Dock
- Paddle Boat
- Camp-Fire Site by Lake
 - Picnic Area
 - Sits on 150 Acres
- Seasonal Mushroom Hunting

Only two cottage on site.
If more than 6 in your group ask about the
possibility of renting the 2nd cottage.

Brown Cottage: 2 adults \$170.00/night
(Maximum 6 guests)

Each additional guest \$15.00/night

Maximum Number of Guest = 6

Check in 3:00 PM - Check out 12:00 Noon

Deposits:

- \$50.00 refundable damage deposit with reservation
- One night's deposit with reservation
- Four or more days require advance first & last night's deposit
- Advance deposit refundable with 3 weeks notice

Reservations are confirmed upon receipt of deposits & signed waivers for all guests, including children

Weekend reservations require a 2 night stay

Well supervised children are welcome

As a courtesy to future guests no pets inside cabin

As a courtesy to future guests no smoking in cabin

Fishing for registered guests only

(Do not supply life jackets)

Ask about hunting privileges

Phone: (573) 243 8397

Fax: (573) 243 8397 *9

Email: info@crystal-lake-retreat.com

Website: www.crystal-lake-retreat.com